



2024 **TOYOTA** **HILUX**
GR 2.8L DIESEL 4X4 D/C AT

BOOK NOW



2024 TOYOTA HILUX DOUBLE CAB GR SPORTS 2.8L DIESEL 4WD AUTOMATIC

MODEL CODE – GUN126L – DTTHXV

ENGINE: 1GD-FTV, 2.8L, 4 CYLINDERS, DIESEL D-4D, TURBO

6 SPEED AUTOMATIC TRANSMISSION

FOUR WHEEL DRIVE (4X4)

5 PASSENGERS (INCLUDING DRIVER)



FRONT PAINT BUMPER
WITH GR SPECIAL GRILL

LED FRONT FOG
LAMP

AUTO RETRACTABLE
POWER SIDE MIRRORS
TURN SIGNAL LAMP &
WELCOME LIGHTS

LED HEADLAMP

TIRE SIZE: 265/65R17



LED REAR LAMPS

17 INCH ALLOY WHEEL

SIDE STEP

OVERFENDERS

HILUX GR SPORT NEW BODYKIT

EXTERIOR FEATURES

17 INCH ALLOY WHEEL

TIRE SIZE: 265/65R17

FRONT PAINT BUMPER WITH GR SPECIAL GRILL

LED HEADLAMP

LED REAR LAMPS

LED FRONT FOG LAMP

STOP LAMP ON DECK DOOR

SMART ENTRY SYSTEM AND ENGINE STOP/START
BUTTON

POWER SIDE MIRRORS WITH TURN SIGNAL LAMP &
WELCOME LIGHTS

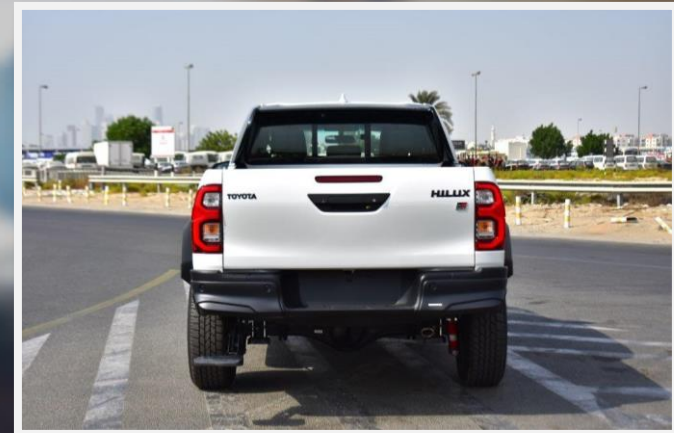
AUTO RETRACTABLE POWER SIDE MIRRORS

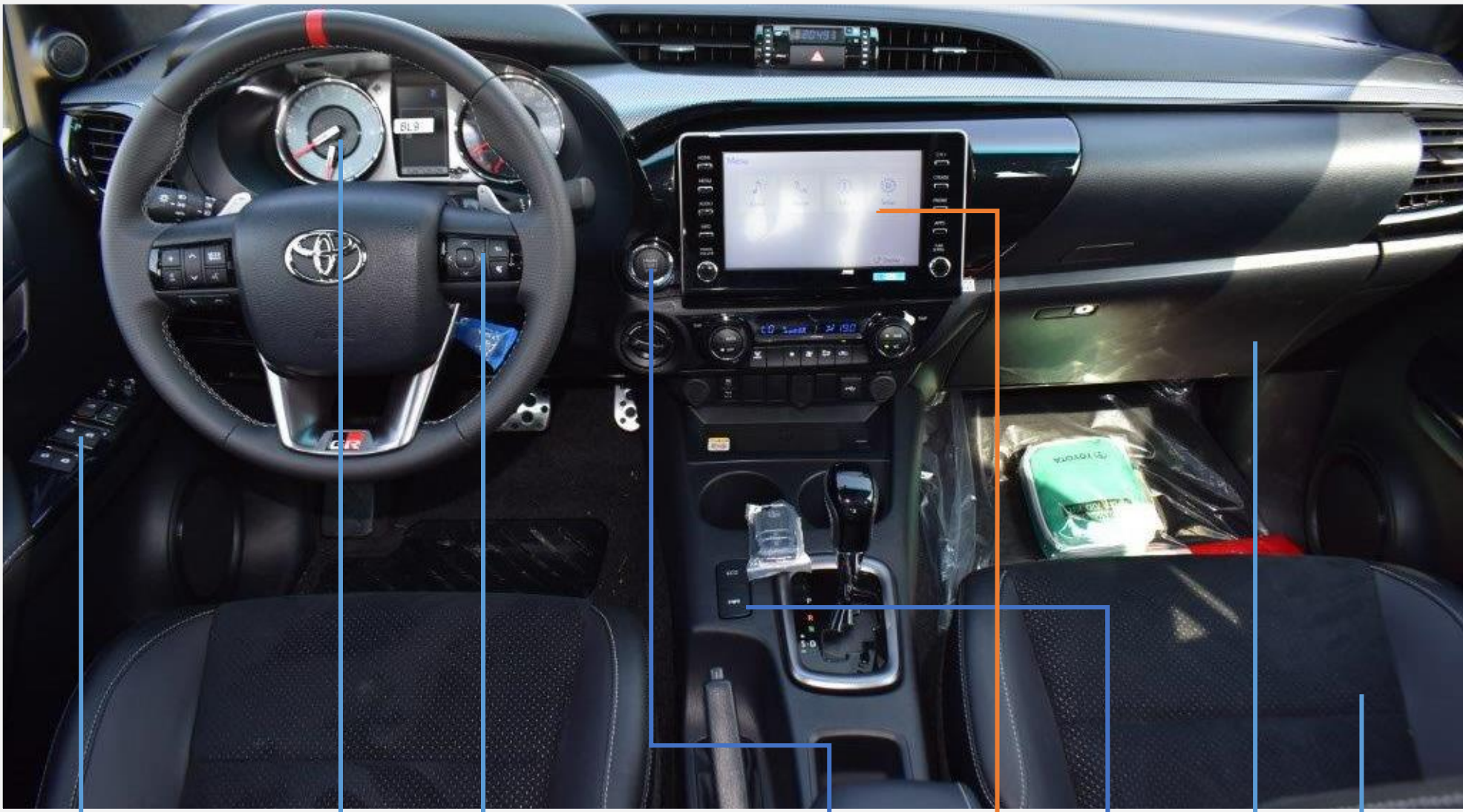
HEADLAMP AUTO LEVELING

SIDE MOLDING ON SIDE DOORS (MADE IN THAILAND)

TAILGATE LIFT ASSIST

SIDE STEP





**AUTOMATIC POWER
WINDOWS ALL DOORS**

**STEERING WITH AUDIO
CONTROL SWITCH**

**ENGINE STOP/
START BUTTON**

**ECO/PWR
DRIVE MODE**

LEATHER SEATS

4.2 INCH MULTI INFORMATION DISPLAY

NAVIGATION SYSTEM TOUCH SCREEN 8" INCH

GLOVE BOX

STEERING WITH AUDIO CONTROLS



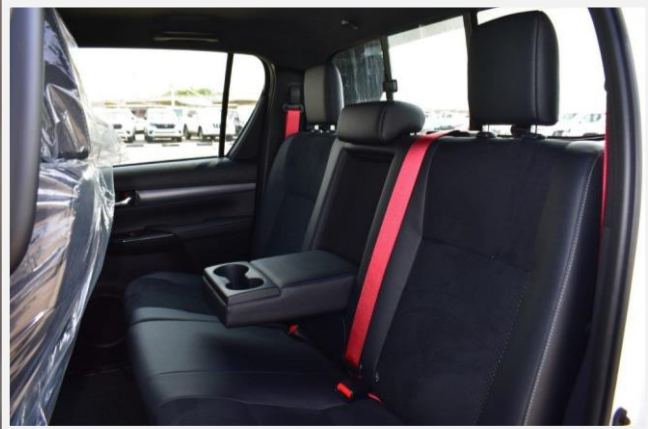
NAVIGATION SYS. TOUCH SCR 8" INCH



AUTOMATIC CLIMATE CONTROL



REAR SEAT ARMREST WITH CUP HOLDER



REAR AIR CONDITIONING VENTS



FRONT SEPARATE SEATS WITH GR LOGO ON HEADRESTS



INTERIOR FEATURES

LEATHER SEATS (GR-S)

AUTOMATIC CLIMATE CONTROL (MADE IN THAILAND)

REAR AIR CONDITIONING VENTS

OVERHEAD CONSOLE

FRONT SEPARATE SEATS WITH GR LOGO ON HEADRESTS

AUTO ADJUSTER FOR DRIVER SEAT

FRONT CUP HOLDERS

PORTABLE ASH TRAY (MADE IN MALAYSIA)

REAR SEAT ARMREST WITH CUP HOLDER

LEATHER STEERING WHEEL WITH MOUNTED CONTROLS WITH GR LOGO

4.2 INCH MULTI INFORMATION DISPLAY

AUTOMATIC POWER WINDOWS ALL DOORS

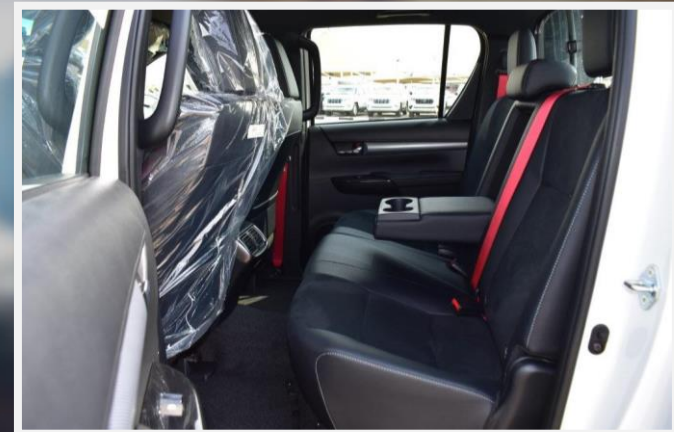
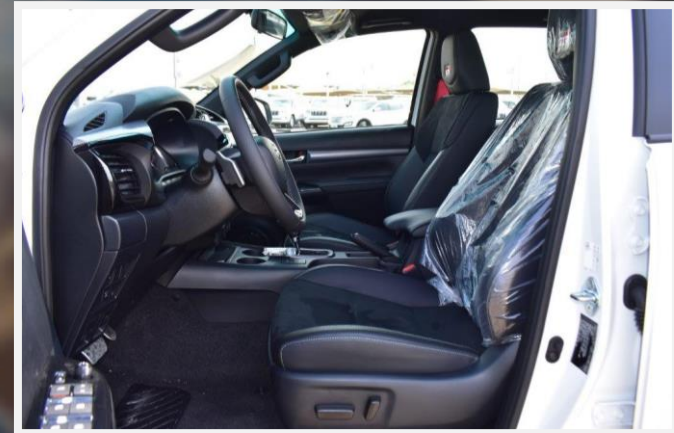
FRONT PASSENGER DOOR LOCK (MADE IN MALAYSIA)

INTERIOR DOOR ILLUMINATION

COOL BOX

IR CUT FRONT GLASS & WINDOWS

SLIDING BACK WINDOW



SAFETY & CONVENIENCE FEATURES

DRIVE MODE SELECT (ECO / PWR)

CRUISE CONTROL

PANORAMIC VIEW MONITOR (4 CAMERAS)

FRONT & REAR PARKING SENSORS

REAR DIFFERENTIAL LOCK

AIRBAGS (DRIVER & FRONT PASSENGER +
KNEE FOR DRIVER)

ANTI-LOCK BRAKE SYSTEM (ABS)

FRONT DISC BRAKES & REAR DRUM
BRAKES

ELECTRONIC BRAKE-FORCE DISTRIBUTION
(EBD)

VEHICLE STABILITY CONTROL (VSC)

HILL-START ASSIST CONTROL (HAC)

TIRE PRESSURE WARNING SYSTEM (TPWS)

ENGINE IMMOBILIZER SYSTEM

FRONT SUSPENSION: GR MONOTUBE

REAR SUSPENSION: LEAF SPRING



CRUISE CONTROL



PANORAMIC VIEW MONITOR



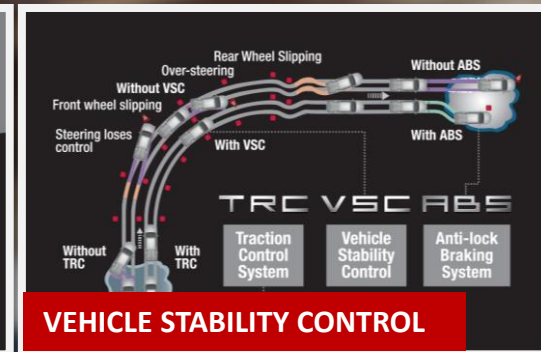
AIRBAGS



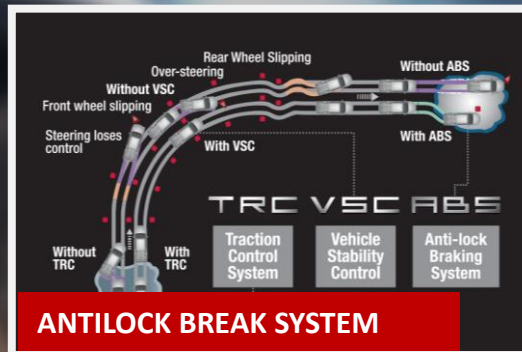
EBD & BREAK ASSIST



HILL START ASSIST CONTROL



VEHICLE STABILITY CONTROL



ANTILOCK BREAK SYSTEM



TIRE PRESSURE MONITORING SYSTEM



2024 **TOYOTA** **HILUX**
GR 2.8L DIESEL 4X4 D/C AT

BOOK NOW

